



SEASILK
LIGHT


















It's always
maritime
SEASILK LIGHT



→ SEASILK LIGHT

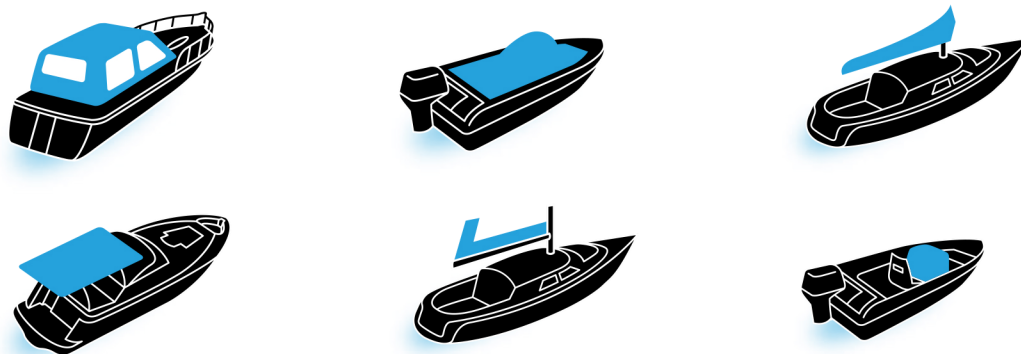


 100% POLYESTER	 150 CM	 0,28 MM	 200 G/M ²	 120 MBAR
 Note 7-8	 Note 7-8	 1600 N ∴ 1000 N ∴∴	 38 % ∴ 35 % ∴∴	 Note 4-5 ☒ Note 4-5 ◊
 Note 4-5	 Note 90	 Note 4	 POLYURETHAN	 SFC

→ CARE RECOMMENDATIONS



→ APPLICATIONS

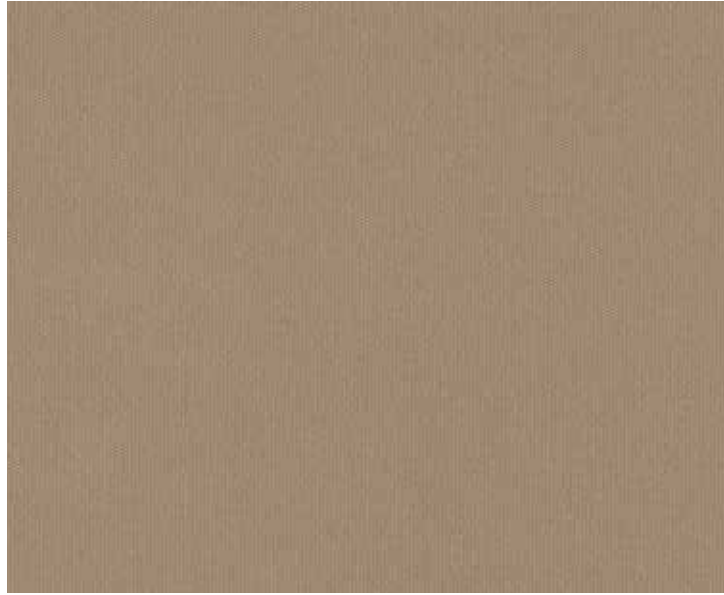


Wichtig! Beschichtete Seite nach innen verarbeiten.
Please ensure that the coated side faces inwards.
Belangrijk! De gecoate zijde aan de binnenkant verwerken.
Important! Face enduite sur la face intérieure.
Importante! Il lato resinato va montato all'interno.

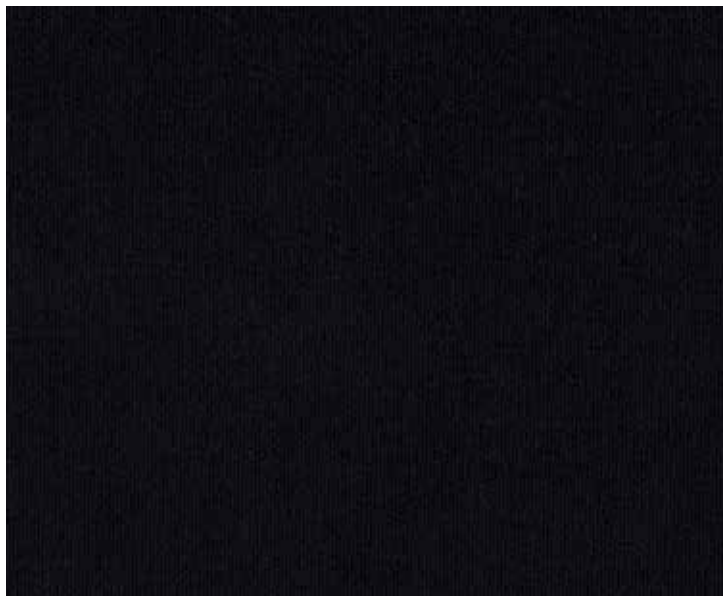
356 17 PEARL



356 37 SAHARA



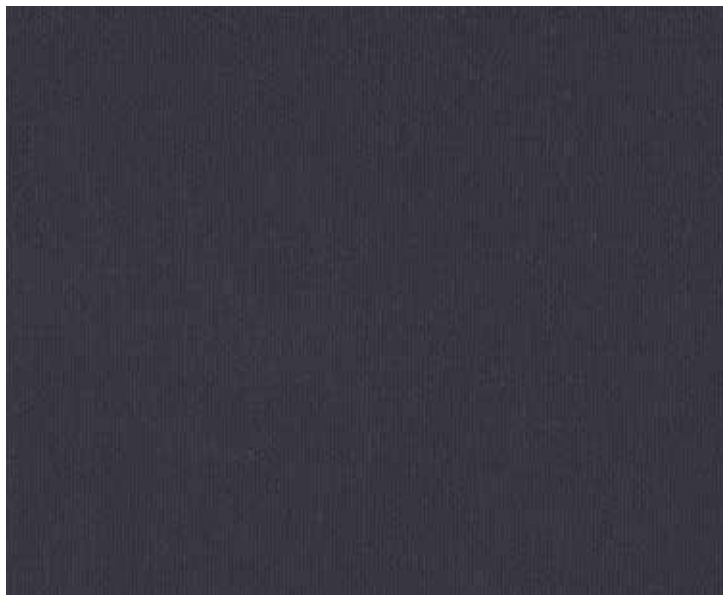
356 49 BLACK



356 65 DARK GREY



356 88 PETROL



356 96 DEEP BLUE



It's always

maritime

SEASILK LIGHT